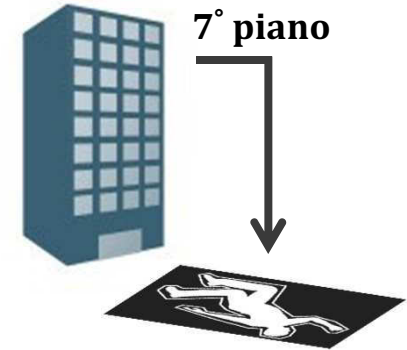
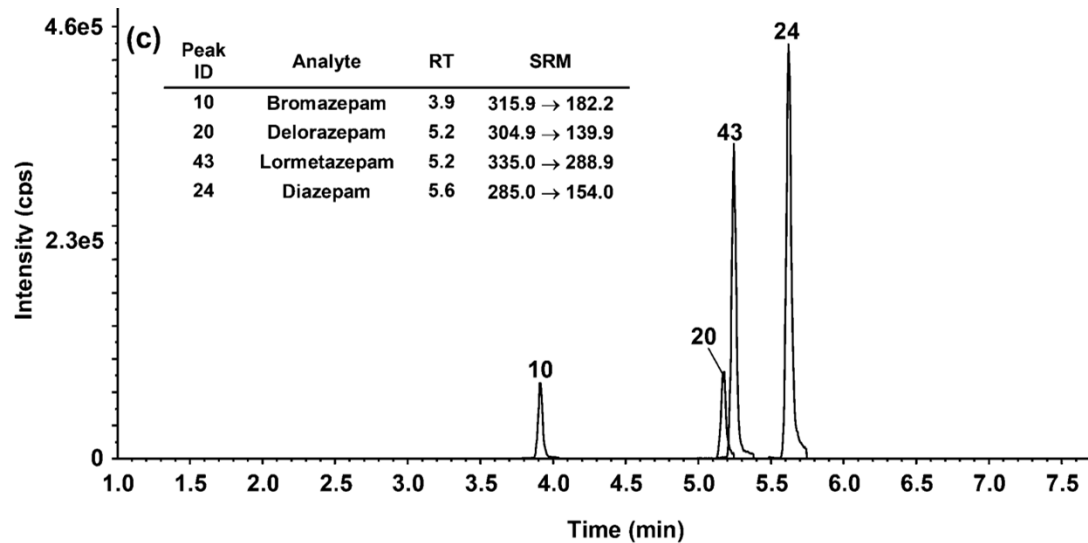
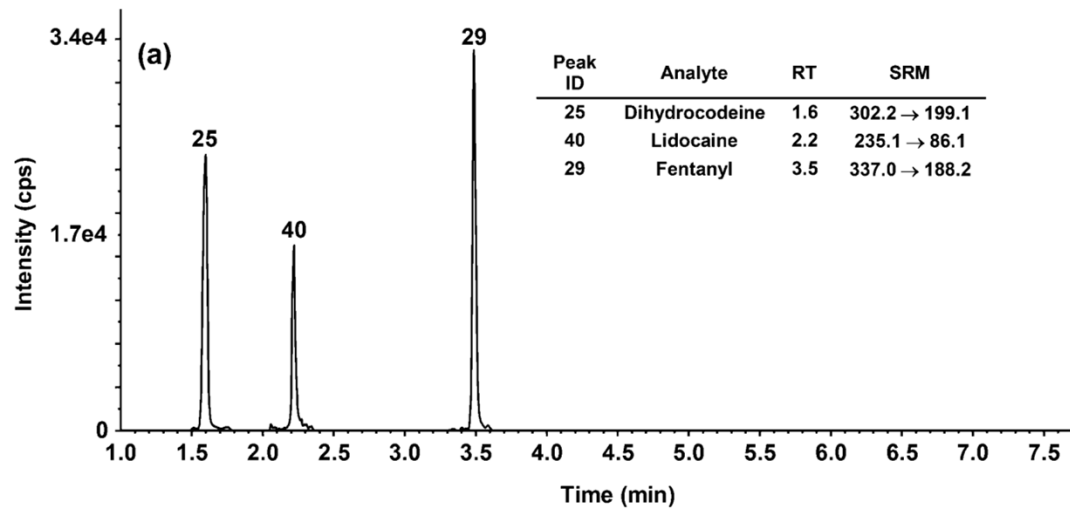






Casi reali



16 anni - suicida



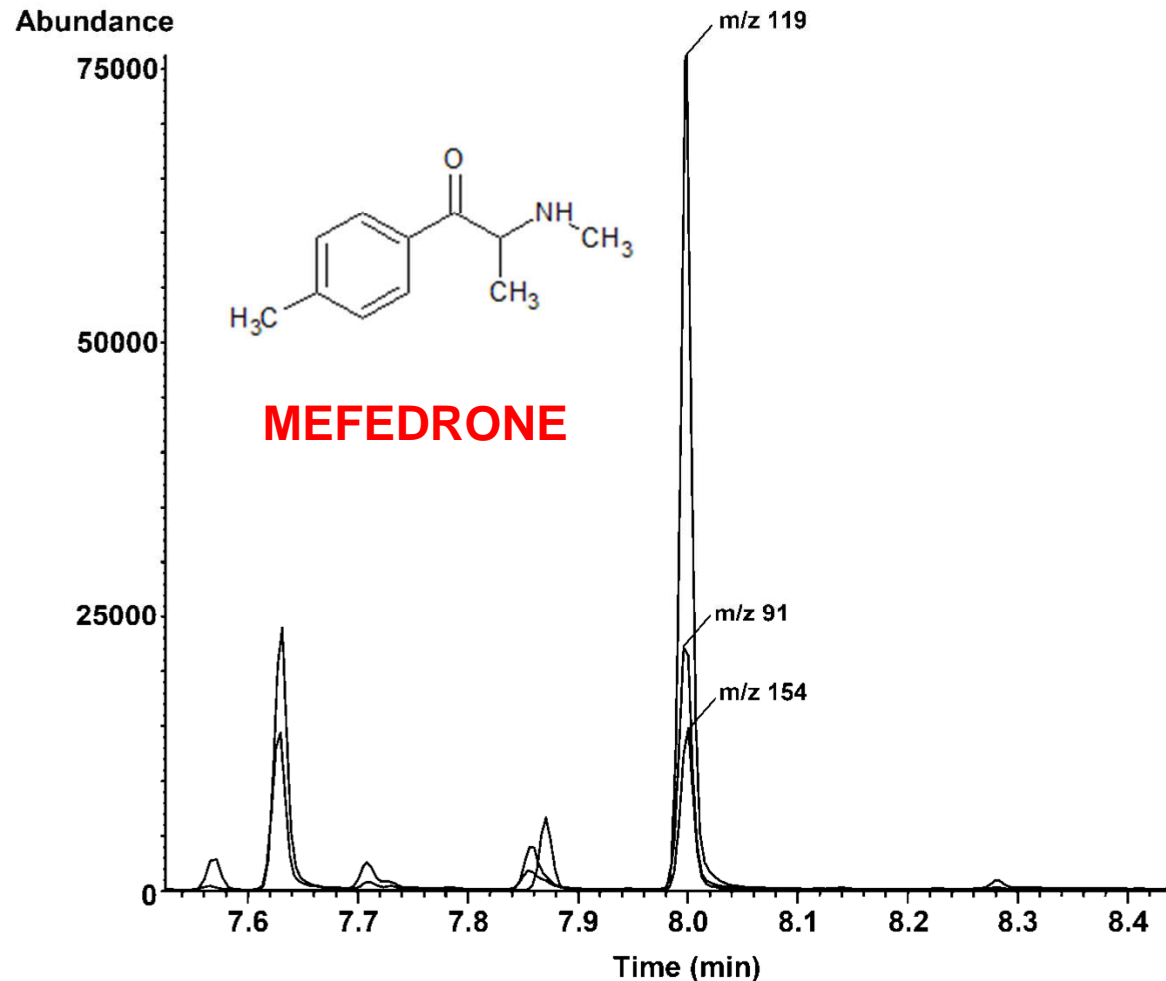
54 anni - trovato morto nel suo appartamento



Nuove droghe: le prime vittime

Toxicological findings in a fatal multidrug intoxication involving mephedrone

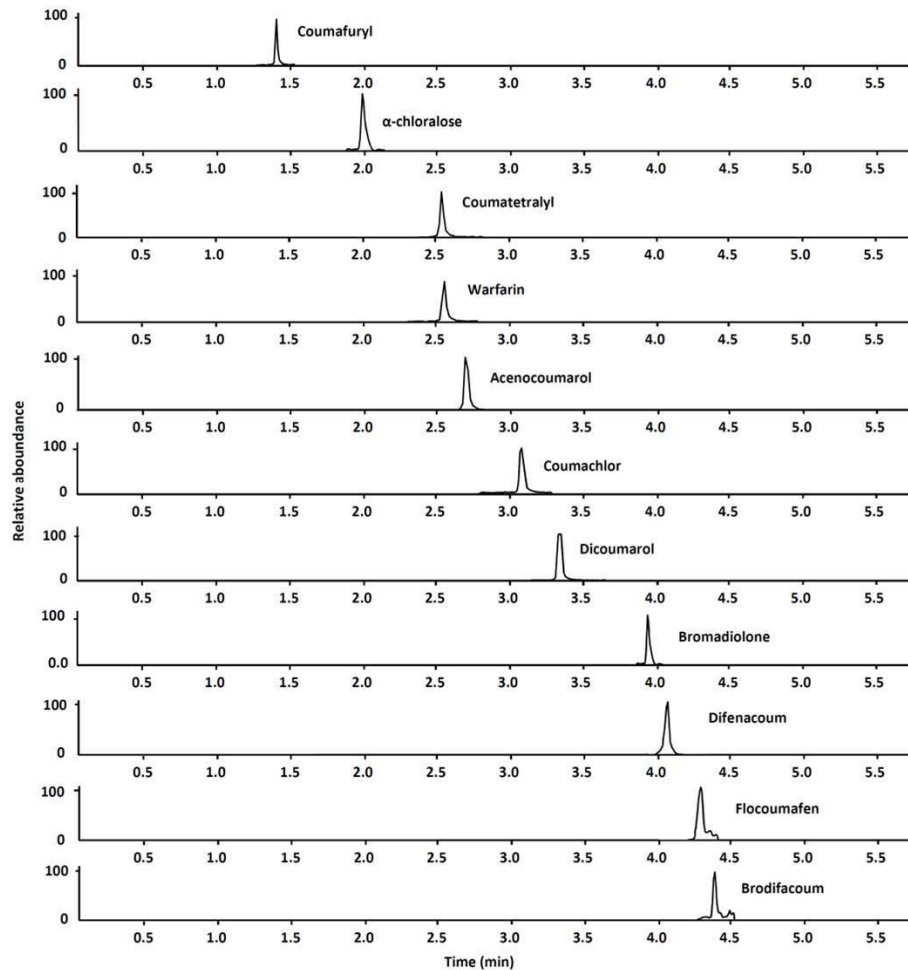
E. Gerace, M. Petrarulo, F. Bison, A. Salomone, M. Vincenti
Forensic Science International, 2014, 243, 68-73



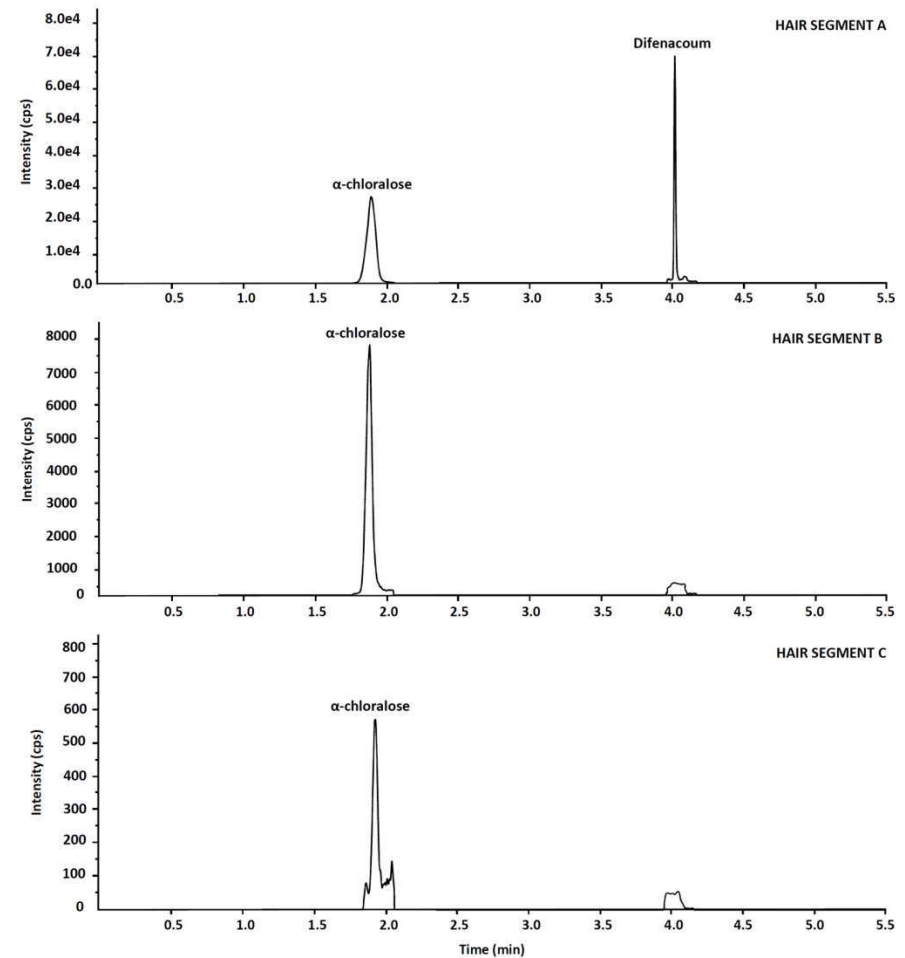
**25 anni – trovato morto
nel suo appartamento**

Intossicazioni da rodenticidi

Miscela di 11 rodenticidi aggiunta a un campione negativo di capelli



Caso giudiziario: analisi segmentale condotta su campione reale di capelli



INTOSSICAZIONI CRONICHE

Caso reale

SINTOMI

- Rigidità muscolare
- sonnolenza



CAMPIONI

- 2 bottiglie d'acqua
- capelli (14 cm)

QUESITI

- ▶ contenuto della bottiglia
- esposizione a droghe
- tempo di esposizione

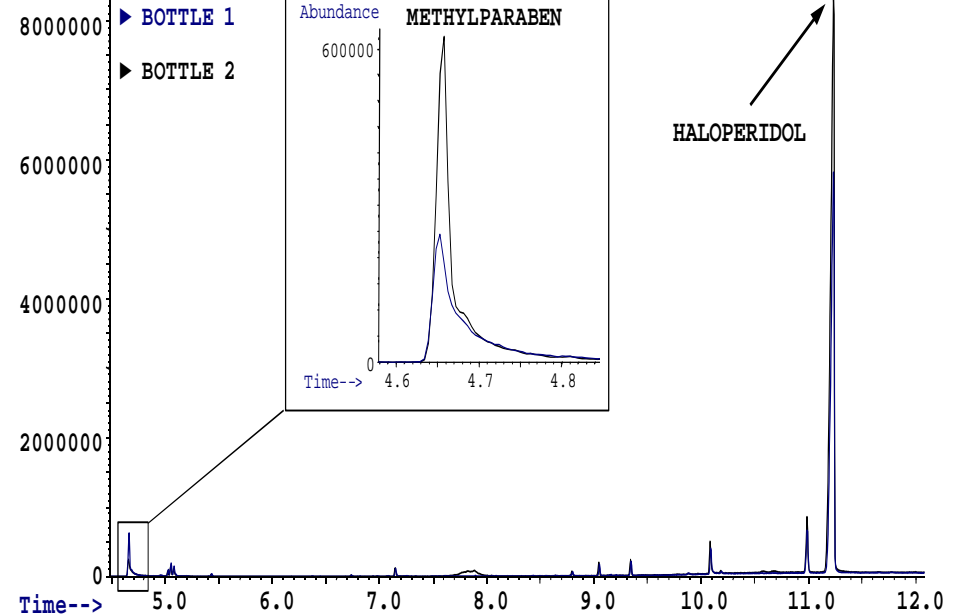
HALOPERIDOL



Bottiglia 1 → 31.5 µg/mL
(~16 mg/500 mL)

Bottiglia 2 → 43.6 µg/mL
(~22 mg/500 mL)

Abundance



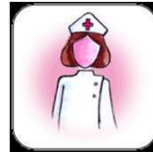
Preparation

**Methyl
paraben** **Propyl
paraben**

Serenase (tablets)	NO	NO
Serenase (oral solutions)	YES	YES
Serenase (2 mg/2 mL inj sol)	YES	YES
Serenase (5 mg/2 mL inj sol)	NO	NO
Haldol (tablets)	NO	NO
▶ Haldol (2 mg/mL oral sol)	YES	NO ◀
Haldol (10 mg/mL oral sol)	YES	YES
Haldol (5 mg/mL inj sol)	NO	NO
Bottle 1	YES	NO
Bottle 2	YES	NO

SINTOMI

- Rigidità muscolare
- sonnolenza



CAMPIONI

- 2 bottiglie d'acqua
- capelli (14 cm)

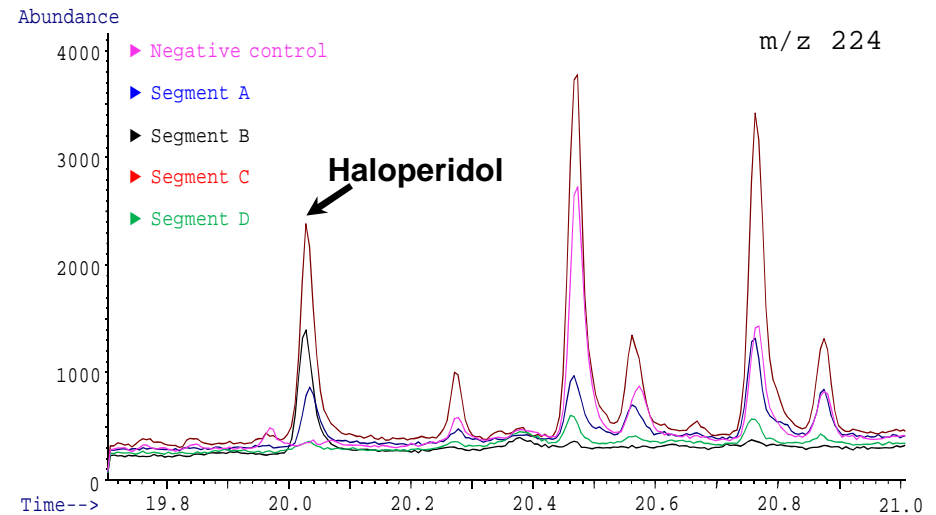
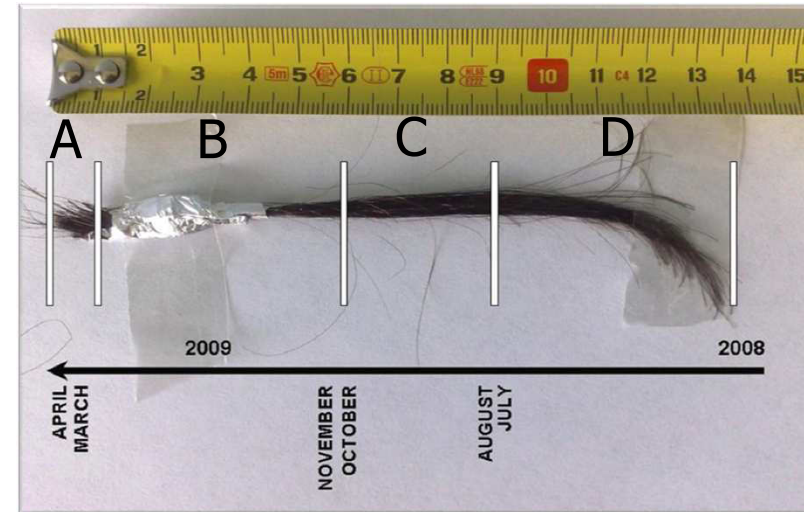
QUESITI

- contenuto della bottiglia
- ▶ ▪ esposizione a droghe
- ▶ ▪ tempo di esposizione

Analisi segmentale

Specimen (diagnostic window*)	Length (cm)	Concentration (ng/mg)
Segment A (March 2009-April 2009)	1	1.4
Segment B (November 2008-March 2009)	5	0.5
Segment C (August 2008-October 2008)	3	1.9
Segment D (before August 2008)	4-5	-

*Estimated average hair growth: 1 cm/month





Ricerca e sviluppo...??

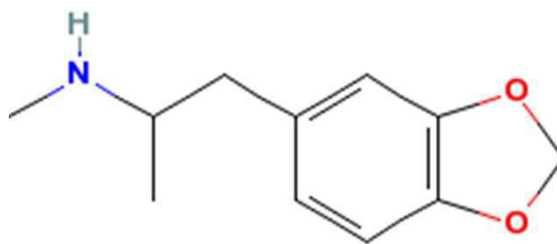


Nuove droghe sintetiche

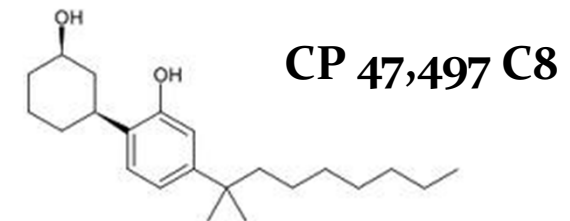
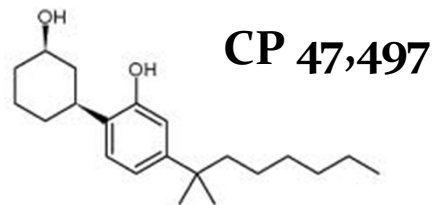
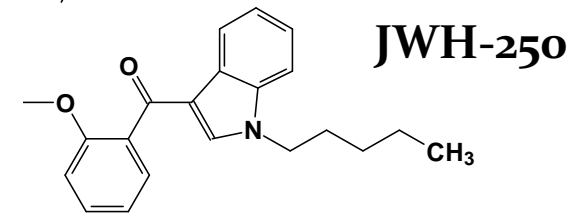
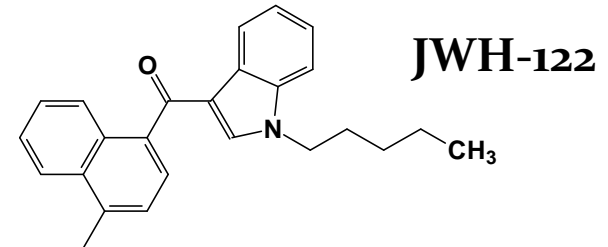
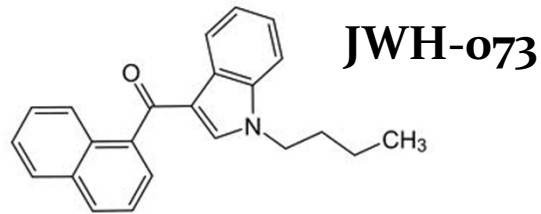
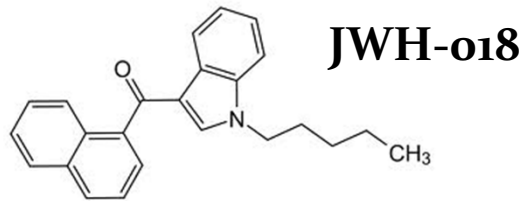
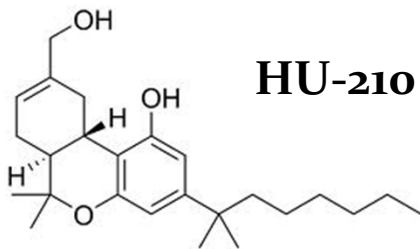
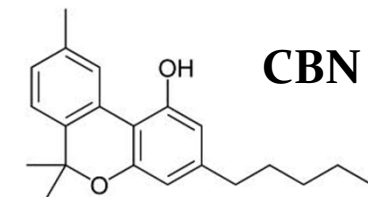
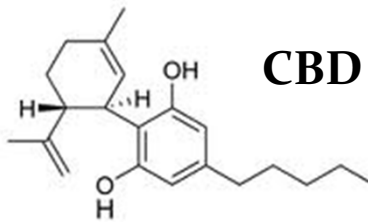
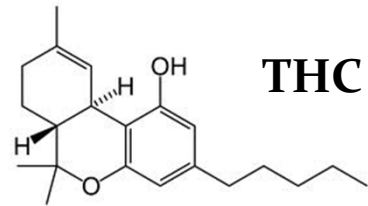
MDMA

Nota come “Ecstasy”, appartiene alla classe dei derivati sintetici dell’amfetamina. È una sostanza psicoanalettica allucinogena che presenta il gruppo metilendiossilico in posizione 3,4 che è responsabile di questa psicotossicità.

L’MDMA ha anche effetti entattogeni ed empatogeni che si manifestano dopo 20-30’ dall’assunzione e perdurano per circa 4-6 h. Tali effetti comportano: ansia difensiva ridotta, umore elevato, introspezione più acuta, migliore capacità di espressione di stati emozionali e sensazioni e sono alla base del motivo per cui l’Ecstasy viene definita “Penicillin for the soul”.



Cannabinoidi sintetici, catinoni sintetici, mefedrone ...



Quale sarà la prossima generazione?

Quantitative Measurement of JWH-018 and JWH-073 Metabolites Excreted in Human Urine

Cindy L. Moran,[†] Vi-Huyen Le,[‡] Krishna C. Chimalakonda,[§] Amy L. Smedley,[†] Felisia D. Lackey,[†] Suzanne N. Owen,[‡] Paul D. Kennedy,^{||} Gregory W. Endres,^{||} Fred L. Ciske,^{||} James B. Kramer,^{||} Andrei M. Kornilov,^{||} L. D. Bratton,^{||} Paul J. Dobrowolski,^{||} William D. Wessinger,[§] W. E. Fantegrossi,[§] Paul L. Prather,[§] Laura P. James,^{§,^} Anna Radomska-Pandya,^X and Jeffery H. Moran^{*,‡,§}

